

HAYSSEN ISB - 330/410



High Speed Vertical Form Fill Seal Bagger

- Available as continuous or intermittent motion
- Meets highest hygienic and food safety requirements
- Open channel IP66 construction suitable for harsh wet environments
- High speed, heavy-duty, servo driven sealing jaw
- Easy, repeatable changeover of films and bag style
- Intuitive operator screens with guided changeovers
- Allen Bradley PLC, 12" HMI, motors & drives
- Metric hardware limited to 5 sizes -ease of maintenance

HAYSSSEN ISB

BW Flexible Systems' Hayssen ISB brings best-in-class sanitary design, modern industrial machine intelligence, and intuitive operation to vertical form fill seal bagging.

Hygienic Design

- Sloped, open channel frame with cutouts for blowing out product.
- IP66 – High pressure washdown with chemicals. HMI, control buttons, and valve manifold are IP69K
- Stainless steel passivated with etched scaling
- Removable film rollers
- Standoffs to separate components - minimize surface to surface contact to less than 1 square inch
- Wires & airlines separated by looms
- Sliding drip pan protects jaw area for scale cleaning
- Continuous welds
- Flanged fasteners with no washers
- Swing out electrical cabinet

Intuitive -Ease of Use

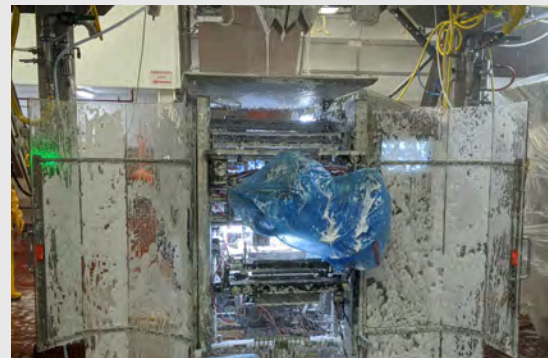
- Scaling / centerlining to ensure repeatability of bag quality
- Only 5 bolt sizes on entire machine allowing for quick maintenance.
- Large access areas, wide opening guards for maintenance
- Machine lighting indicates machine status
- Swing-out Forming Tube improves ergonomics of FTA removal
- Arc Flash compliant design with separated high & low voltage cabinets
- Motor-driven unwind
- Pneumatic film reel with quick release

Intelligent Features

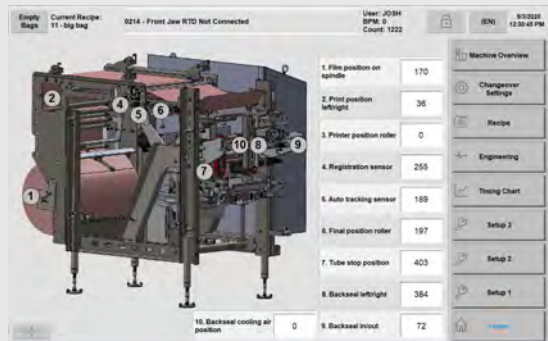
- RFID capabilities allow access-levels by role, data collection by role, or data collection by person
- Guided step by step changeover
- Secondary HMI option for troubleshooting guides at point of issue
- Remote monitoring and tele-assistance / diagnostics



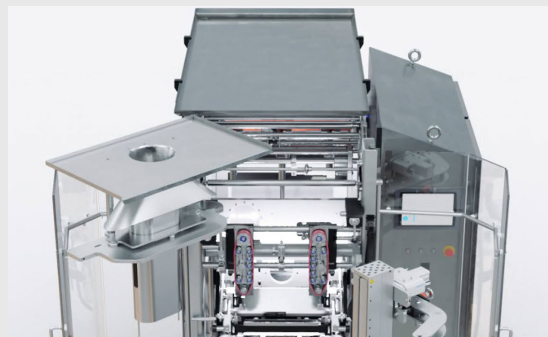
Separate low and high voltage access



IP66 High-pressure washdown including the HMI



Intuitive HMI Screen - Guided changeover



FTA Changeover Safety & Accessibility