

Thiele 7107 Swinger Automatic Bag Hanger



Features

- Fully automatic operation
- Accommodates many types of bags
- Traveling bag spout increases speed up to 20 bags per minute
- Large, easy-to-load magazine with no shutdown for reloading
- Bag magazine automatically indexes next stack of bags
- Automatic no-bag/no-product sensor prevents the scale from dumping product unless a bag is in place on the holder
- Electro-pneumatic controls require little maintenance
- Quick and easy adjustments for bag size changes
- Low profile, easily integrates with most scales

Thiele 7107 Swinger Automatic Bag Hanger

The Thiele Series 7107 Swinger Bag Hanger automatically hangs heavy-duty flat tube or gusseted open-mouth poly, paper or poly woven bags. Featuring a "traveling" bag spout that moves to meet the bag pickup assembly, Thiele's 7107 Swinger Bag Hanger offers speed up to 18 bags per minute.

Key Benefits

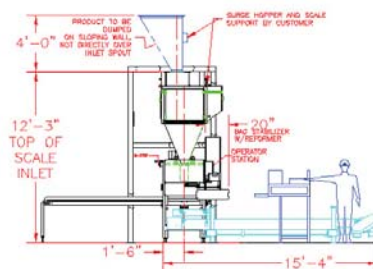
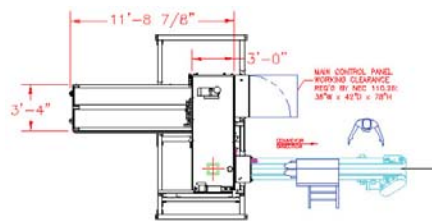
- Easily accessible controls
- Simple operation
- Reduced downtime
- Increased accuracy

Additional Features

- Spout can be sized to bag for maximum speed
- Corrosion resistant construction
- Right or left hand layout available to fit space requirements
- Customized magazine lengths and widths
- Dust collection nozzles
- Scales / PLC scale control
- HMI maintenance reminder banners
- Ethernet connection
- Servo bag to tray
- Servo tray to spout
- Robotic reformer available
- Vee-Trof available

Industries Served

- Pet food
- Sugar
- Salt
- Seed
- Fertilizer
- Rice
- Chemical



Specifications	
Production Speed	
Up to 18 bags per minute	
Dimensions	
Length	11 ft. 10 in. (3606.8 mm) without Vee-Trof conveyor
Width	5 ft. 9 in. (1752.6 mm)
Height (to bottom of hopper)	6 ft. 4 in. - 6 ft. 8 in. (1930.4 mm - 2032 mm) adjustable
Shipping Weight	
Bagger	2500 lbs. (1136 kg)
Bag Magazine	300 lbs. (136 kg)
Closing Conveyor	300 lbs. (136 kg)
Electrical Requirements	
Input Power	240/480 VAC, 3-phase, 60 hertz, 30/15 amps
Control Circuit	24 VDC from internal power supply
Current Draw	240 volts (10 amps) 480 volts (5 amps)
Air Requirements	
Operating Pressure	80 psi (5.4 atm)
Line Pressure	90 psi (6.1 atm)
Air Use Per Cycle	1.0 cubic ft. (28.32 liters)
Bag Sizes	
Face Width	Gusset: 10 in. - 22 in. (254 mm - 558.8 mm) Flat Tube: 12 in. - 24 in. (305 mm - 609.6 mm)
Length	Gusset: 2 ft. 1 in. - 3 ft. 4 in. (635 mm - 1016 mm) Flat tube: 2 ft. 1 in. - 3 ft. 4 in. (635 mm - 1016 mm) Max. Gusset: 5 in. (127 mm)

Hayssen | Hudson-Sharp | Rose Foregrove | Sandiacre | Schib | Sionato | SYMACH | Thiele